



Crawler Conceptz Ultra Series JK Body Mounted Tire Carrier Installation Instructions



***** PLEASE WEAR PROPER
SAFTEY EQUIPMENT DURING
THE ENTIRE INSTALLATION *****

***** You will need to coat or paint all raw metal, including cam locks to prevent rust *****

REQUIRED TOOLS:

9/16" Socket and Wrench	13mm Socket
7/16" Socket and Wrench	T50 Torx Bit
3/8" Allen Wrench or Hex bit	Rubber Hammer or Dead Blow Hammer
5/16" Allen Wrench or Hex bit	#1 Screw Driver/Flat Head Screw Driver
3/4" Open End Wrench	Metal Cutting Tool:
17mm Open End Wrench	Dremel or 4 1/2" Angle Grinder with metal cutting wheel
Medium Grade Loctite	

REQUIRED PARTS:

Carrier Frame	4 Hinge bushing halves
Tailgate Plate	2 Hinge inner steel bushings
2 Hinge brackets	1 U-Shaped tailgate Bushing
Carrier Bracket	3 Wheel studs and stud nuts
Wheel Bracket	2- 1/2 "x 5" hinge bolts w/ cam fittings washers and nuts
License Plate Relocation Bracket	2- 7/16 "x 4" w/ washers and nuts
Male & female Heim Joint w/jam nut	6- 3/8" x 1" Grade 8 bolts with washer and nuts
4- 1/8" thick x 3/8" I.D. spacers	2- 3/8" X 1 3/4" Grade 8 bolts w nuts and washers
	2- 1/2 "Grade 8 bolts with washers and nuts
	2- 1/4 "x 1 3/4" Grade 8 bolts w/washers and nuts

Step 1: Prepping the tailgate

Remove factory tire carrier by removing the 8 bolts with a 13mm Socket *Retain the 8 bolts as they will be reused*

Remove factory vent insert

Remove the plastic hinge covers

Step 2: Removing and separating tailgate hinges

Remove the factory tailgate hinges **ONE AT A TIME**, with a 13mm socket and a T50 torx bit. *Retain the four 13mm bolts and six T50 bolts as they will be reused*. Once the hinge is removed from the Jeep, cut the hinge pin that holds the two parts of the hinge together with a metal cutting wheel. A Dremel or 4 ½” angle grinder works well.



After the pin is cut, pull the pin out and separate the two halves of the hinge. Retain the long half of the hinge that mounts to the tail gate.

Step 3: Installing carrier hinge brackets

Mount the hinge bracket on the Jeep using three of the (6) T50 bolts. Apply Medium grade Loctite to the T50 bolts. Then install the long factory hinge half to the carrier hinge bracket using the 7/16 "x 4" bolt. Bolt the long hinge half to the tailgate using (2) of the four 13mm bolts.

*Repeat Steps 2 and 3 on second hinge that was left mounted. *



Step 4: Installing tailgate plate

Install the tailgate plate with the (8) 13mm bolts. Install the U-shaped bushing in the center tabs with the 1/4" x 1 3/4" bolts



Step 5: Installing hinge bushings in the carrier

Lightly coat the bushing halves and inner steel bushings with general purpose grease. Install them into the hinge points of the carrier. Light taps with a dead blow hammer in a circular motion will help seat the bushings.

Step 6: Installing the carrier to the hinge brackets

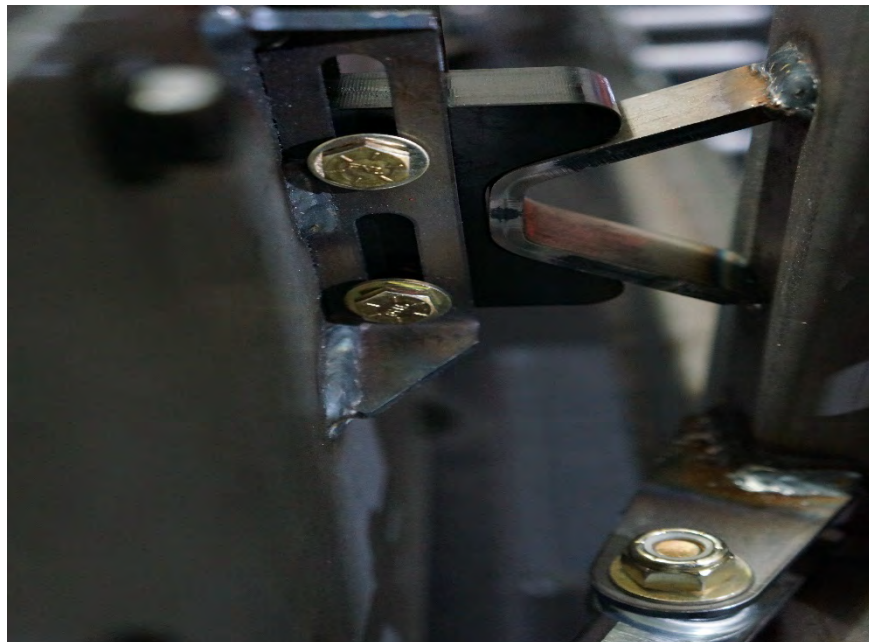
Mount the carrier to the hinge brackets on the Jeep using the two $\frac{1}{2}$ "x 5" hinge bolts and cam fittings. Snug the bolts up but leave loose for adjustment after installation is complete.



Step 7: Attaching carrier to tailgate

Connect either end of the Male and Female heim joint to the carrier tabs using one 3/8" x 1 3/4" Grade 8 bolts w/washer and nut. Insert bolt through carrier tab then through 1/8" x 3/8" I.D. spacer, then heim, then through a 1/8" x 3/8" I.D. spacer, then through tab. Install washer and nut. Close the carrier and repeat the same steps on the tailgate plate tabs.

Adjust the heims so that the carrier is pushing into the U-shaped bushing on the tailgate plate. If the carrier rattles, the heim joints need to be shortened until the rattle has stopped. Finally, tighten jam nut.



Step 8: Installing carrier bracket to carrier

Install the carrier bracket to the carrier with the triangle pointing up using four 3/8" x 1" Grade 8 bolts W/washer and nuts. Select the height that works with your wheel and tire.



Step 9: Selecting and installing wheel stud pattern.

Match the wheel bracket stud pattern to that of the wheel you will be mounting to the carrier. Once you have selected the pattern, drive the studs into the bracket. You can drive the studs all the way or you can use an impact gun and stud nut to pull them through.



Step 10: Mounting wheel bracket to carrier bracket

Set the wheel bracket on top of the carrier bracket and install two 3/8" x 1" Grade 8 bolts w/washer and nut, through the holes in wheel bracket and the slots in the carrier bracket. Snug bolts but, leave loose enough for wheel backspacing adjustment.



Step 11: Mounting wheel and tire

Mount the wheel to the wheel bracket and tighten wheel stud nuts. Slide the wheel and wheel bracket forward, towards the front of the Jeep so that the tire is pushing against the carrier on both sides. **Make sure the tire is as tight to the carrier as possible.** Then tighten the two 3/8" x 1" Grade 8 bolts in the wheel and carrier bracket.

Step 12: Mounting License Plate relocation bracket.

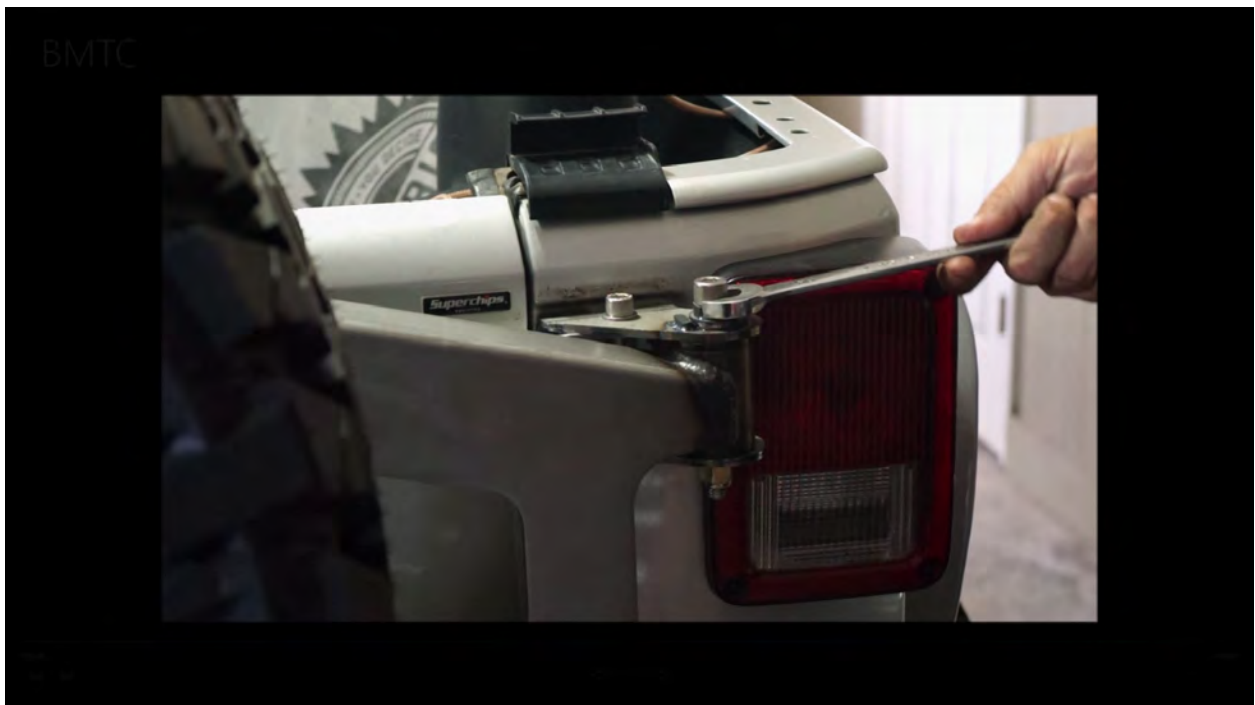
(Optional)

Using the two 1/4" x 1/2" grade 8 bolts mount the license plate bracket to the wheel bracket



Step 13: Final Adjustments

Now that the Ultra Series JK Body Mounted Tire Carrier is Installed, adjust the cam bolts with a $\frac{3}{4}$ " wrench such that the carrier sits level and opens smoothly. Finally, tighten all of the nuts and bolts on the entire carrier.



For further assistance, please view our [Youtube installation video](#) or, contact tommy@crawlerconceptz.com